

# STRATHMORE ESTATES AT BOYNTON BEACH PLAT 2

PART OF LAKES OF BOYNTON BEACH P.U.D.  
BEING A REPLAT OF A PORTION OF BLOCK 48, "PALM BEACH FARMS COMPANY"  
PLAT NO. 3 (P.B. 2 PGS. 45-54)  
SITUATE IN SECTION 22, TOWNSHIP 45 SOUTH, RANGE 42 EAST  
PALM BEACH COUNTY, FLORIDA

FEBRUARY, 1989 SHEET 2 OF 3

PALM BEACH FARMS COMPANY PLAT NO. 3  
BLOCK 48, P.B. 2, PGS. 45-54

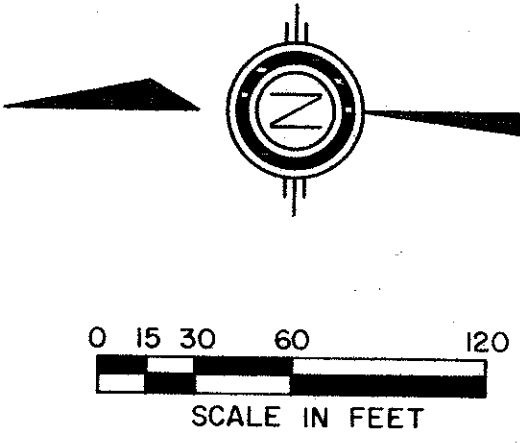
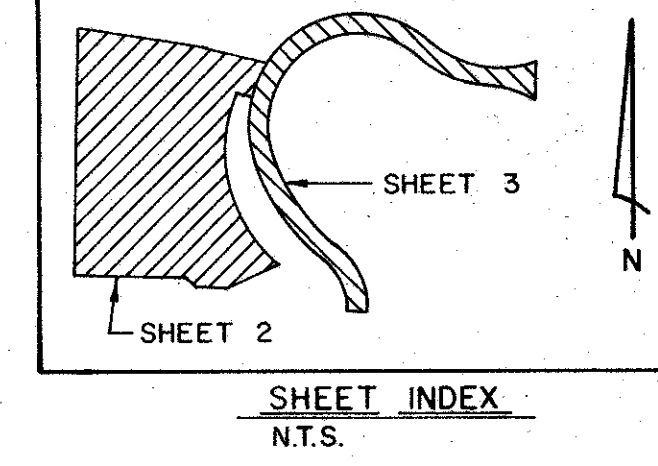
**99**

STATE OF FLORIDA  
COUNTY OF PALM BEACH

THIS PLAT WAS FILED FOR  
RECORD \_\_\_\_\_  
THIS \_\_\_\_\_ DAY OF \_\_\_\_\_  
AD, 1989 AND DULY RECORDED  
IN PLAT BOOK \_\_\_\_\_ ON PAGES  
\_\_\_\_\_ AND \_\_\_\_\_

JOHN B. DUNKLE, CLERK  
BY: \_\_\_\_\_, D.C.

CIRCUIT COURT SEAL



REPLAT G9 PG 29-30

STRATHMORE ESTATES AT BOYNTON BEACH PLAT  
P.B. 49, PGS. 26-27

0391-002

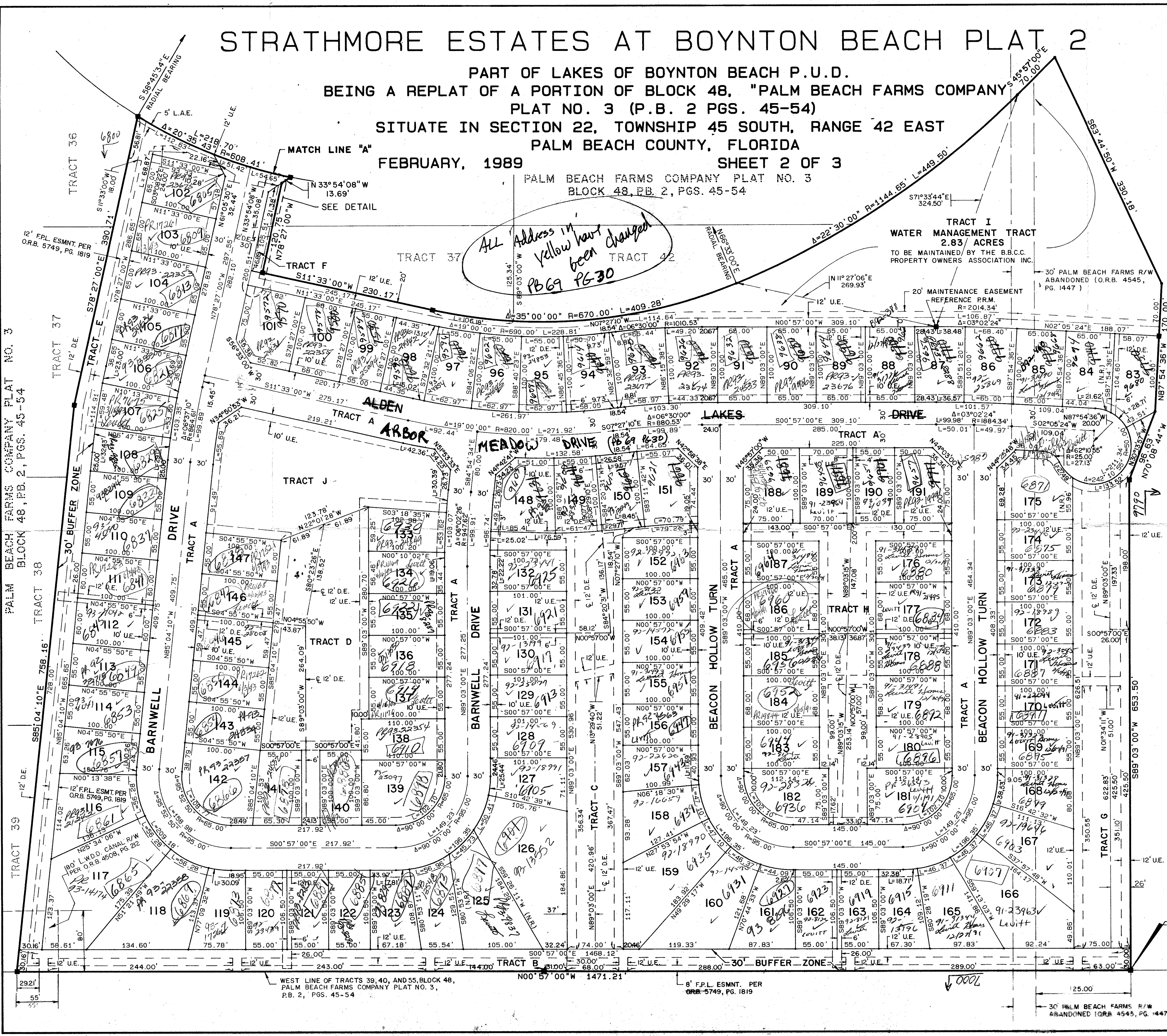
ADD BY  
CREATED BY  
**6269**

P.O.B.  
NW CORNER STRATHMORE ESTATES  
AT BOYNTON BEACH PLAT I

**STANLEY/WANTMAN, INC.**

2000 LOMBARD STREET, WEST PALM BEACH, FL 33411  
DRAWN M.H.C. DATE JULY 1988  
CHECKED W.B.H. SCALE 1" = 60'  
DRAWING NO. 09831PL

STRATHMORE ESTATES  
AT BOYNTON BEACH  
PLAT 2



62  
35  
185A  
RS 83-58 742 443  
33457  
Date of Computer Print 10/20/89  
2/15/92

PALM BEACH FARMS COMPANY PLAT NO. 3  
BLOCK 48, P.B. 2, PGS. 45-54

WEST LINE OF TRACTS 39, 40, AND 55, BLOCK 48,  
PALM BEACH FARMS COMPANY PLAT NO. 3,  
P.B. 2, PGS. 45-54

8' F.P.L. ESMNT. PER  
O.R.B. 5749, PG. 1819

30' PALM BEACH FARMS R/W  
ABANDONED (O.R.B. 4545, PG. 1447)

Lakes of Boynton